



# Meraki

## Get Connected—MDM

Mobile Device Management Setup

### GGHS MDM

- Go to <https://m.meraki.com>
- Enter 'GGHS' for the network ID then click 'Register'.

**Meraki SM Setup**

**Step 1: Enter your Network ID**

The Network ID is either a 10-digit code or a combination of letters, numbers, or characters (e.g. 123-456-7890 or network-id).

By installing Systems Manager on your device you acknowledge that you have read and understood the terms of our [Privacy Policy](#).

GGHS

Register

- Enter your school email address for the username, and password then click 'Login'.

**Meraki SM Setup**

**Enter your credentials**

Username

Password

Login

- Click 'Download System Manager Agent'.

**Meraki SM Setup**

You must install the Meraki Systems Manager desktop agent!

Download the Systems Manager Agent

Windows 10 MCM

In addition to the agent you can gain more functionality, such as receiving preconfigured WiFi settings, by enrolling in Windows 10 MCM via workplace settings on your device.

Open workplace settings

- Once the file has downloaded, the file link will appear at the bottom left. Click it to run the file.

**Meraki SM Setup**

Registration completed!

Waiting for your device to check in.

Windows 10 MCM

After installing the agent you can gain additional functionality, such as receiving preconfigured WiFi settings, by enrolling in Windows 10 MCM via workplace settings on your device.

Open workplace settings

- Accept the licence agreement and click install.

**Meraki Systems Manager Agent Setup**

Please read the Meraki Systems Manager Agent License Agreement

Last Updated August 30, 2013

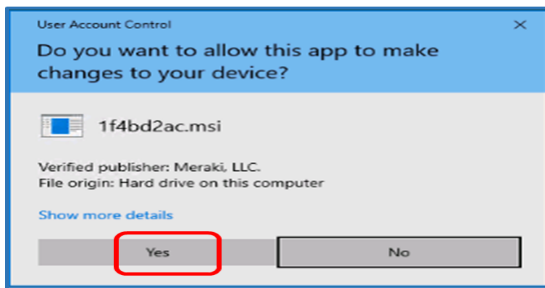
**END CUSTOMER AGREEMENT**

This END Customer Agreement (this "Agreement") FORMS A LEGALLY BINDING AGREEMENT BETWEEN YOU AND Meraki, LLC ("MERAKI") and governs Your acquisition and use of MERAKI PRODUCTS. PLEASE READ THIS AGREEMENT CAREFULLY. THIS AGREEMENT GOVERNS THE TERMS UNDER WHICH YOU MAY USE OUR FREE WEB AND MOBILE APPS, PURCHASE HARDWARE FROM US OR OUR AUTHORIZED RESELLERS, AND PURCHASE A LICENSE.

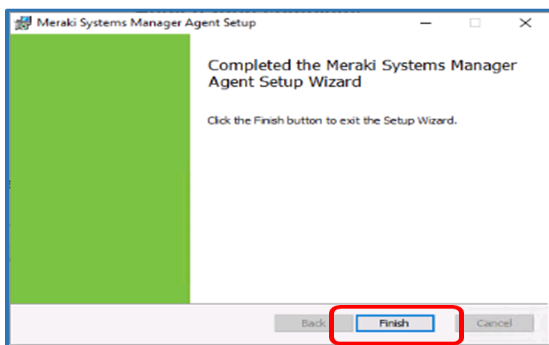
☐ I accept the terms in the License Agreement

Print Back Install Cancel

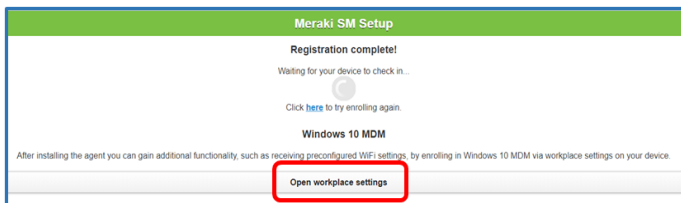
- Click 'Yes' to allow the install.



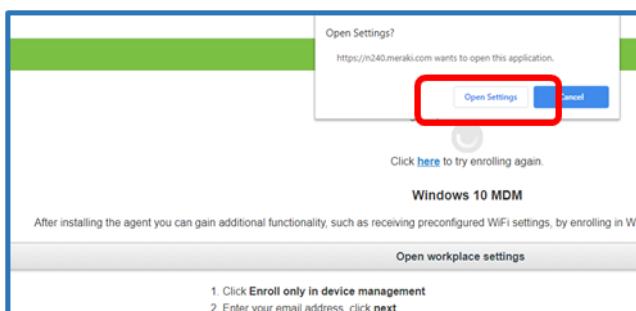
- The install has completed, click 'Finish'.



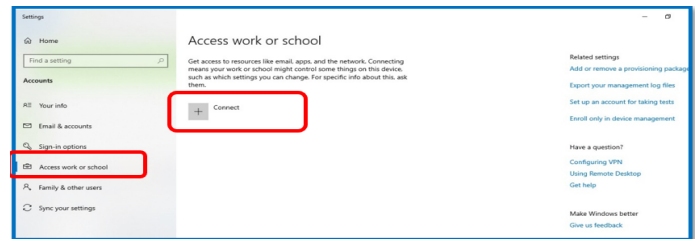
- Return to your web browser and click "Open Workplace settings"



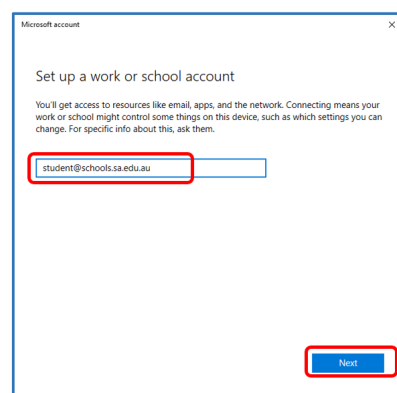
- The browser will prompt you to open settings. Click 'Open settings'



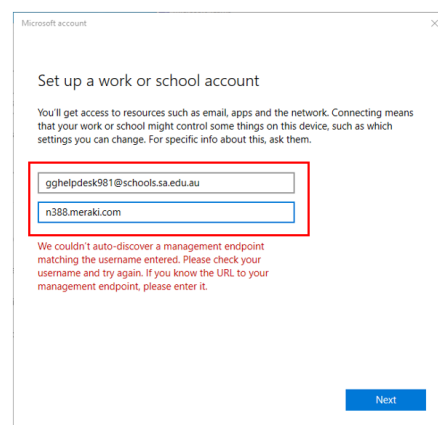
- This will open 'Access work or school' window.
- Click 'Access work or school'.
- Then click 'Connect'.



- Enter your school email address then click 'Next'.



- You will then be asked for MDM server URL.
- Enter n388.meraki.com
- Click 'Next'.



- Enter 'GGHS' for the network ID then click 'Register'.

Meraki SM Setup

Step 1: Enter your Network ID

The Network ID is either a 10-digit code or a combination of letters, numbers, or characters (e.g. 123-456-7890 or network-id).

By installing Systems Manager on your device you acknowledge that you have read and understood the terms of our [Privacy Policy](#).

GGHS

Register

- Enter your school network password. Because you used your school email previously it should be pre-filled.
- Click 'Login'.

Meraki SM Setup

Enter your credentials

Username

3@schools.sa.edu.au

Password

••••••••

Login

By installing Systems Manager on your device you acknowledge that you have read and understood the terms of our [Privacy Policy](#).

- Your device is now enrolled and will download settings. Click 'Got it'.

Microsoft account

Setting up your device

It will take a few minutes to connect to your school or workplace. Any company apps, network settings, email accounts, security policies, or other settings that your school or workplace has set up for you will soon be set up on your device. If you don't have access after waiting a few minutes, open the Settings app and select Accounts > Access work or school > Info > Sync.

Got it



MDM

- You will now see 'Connected to Department for Education MDM' listed in the Access work or school setting page.
- Click 'X' to close the tab.

Access work or school

Get access to resources like email, apps, and the network. Connecting means your work or school might control some things on this device, such as which settings you can change. For specific info about this, ask them.

+ Connect

Connected to Department for Education MDM  
Connected by student@schools.sa.edu.au

Access work or school